

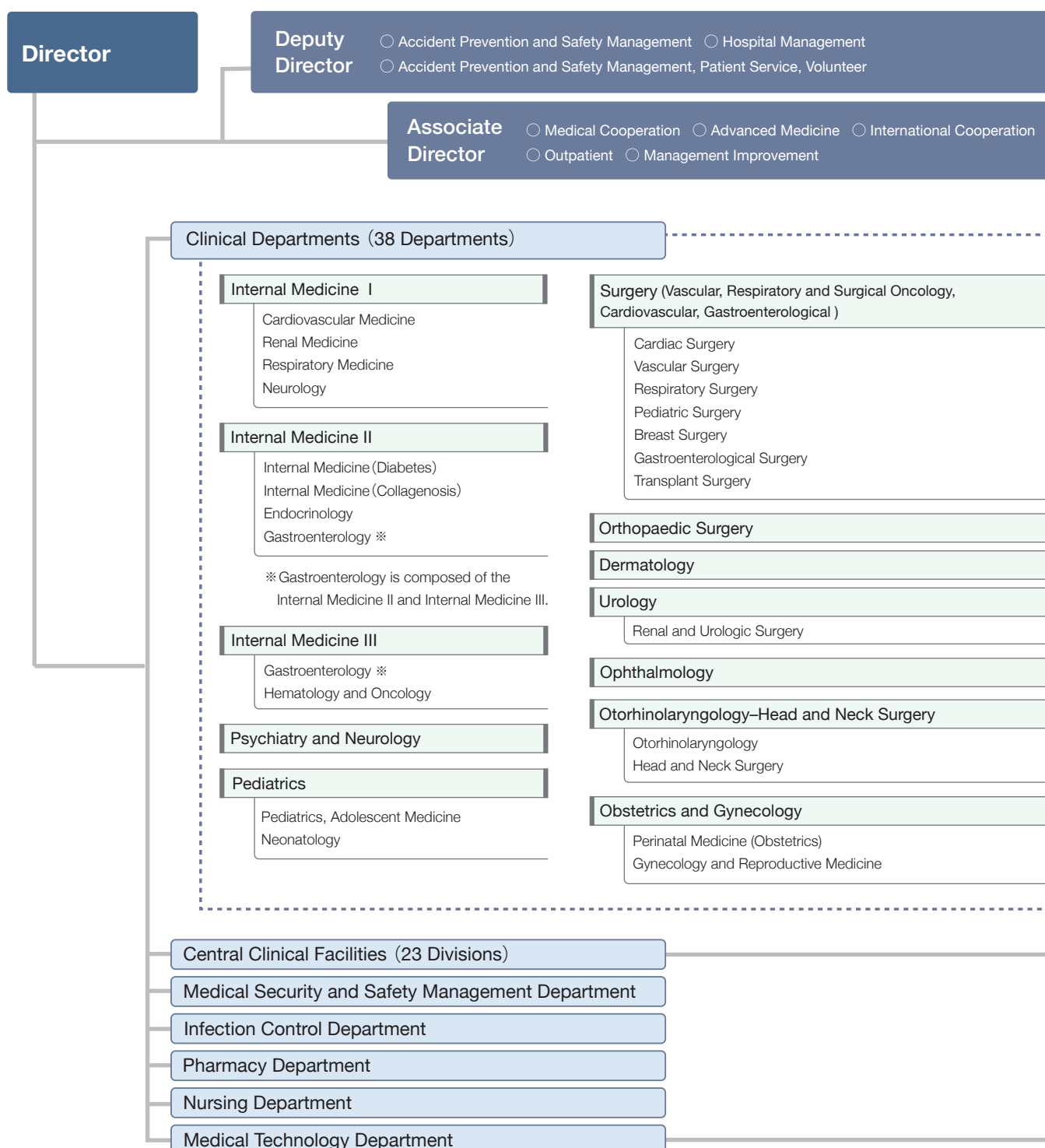
Asahikawa Medical University Hospital

Asahikawa Medical University Hospital

Hospital Philosophy

Recognizing our mission as a university affiliated hospital, we provide advanced medical care with a strong focus on the human rights and dignity of the sick; we foster health care professionals who will be able to lead the next generation, contribute to community health, and be active internationally.

Organization Chart



Asahikawa Medical University Hospital

Objectives

1. To show consideration for the sick and provide medical care for and develop rapport with the patient.
2. To provide anthropocentric medical care, harmonizing medical care holistic with advanced techniques.
3. To contribute to the betterment of community health and welfare, playing active roles in prevention and health support.
4. To foster medical professionals who are rich in spirit and who respect the right of the sick and understand the dignity of life.
5. To create future medical care and disseminate the results at home and abroad.

Radiology

Radiology (Diagnostic Radiology, Interventional Radiology)
 Radiology (Radiation Oncology)
 Radiology (Nuclear Medicine)

Anesthesiology and Critical Care Medicine

Anesthesiology and Critical Care Medicine
 Anesthesia, Pain clinic
 Palliative Care

Neurosurgery

Oral and Maxillo-Facial Surgery

Emergency

Physical Medicine and Rehabilitation

Pathological Diagnosis

Department of Endoscopy

Oncology Center

Respiratory Center

Department of Palliative Care

Breast Disease Center

Medical Laboratory Transfusion Section

Radiological Technology Section

Pathological Technology Section

Rehabilitation section

Clinical Engineering Section

Institutional Certified Evaluation and Accreditation

Asahikawa Medical University Hospital is accredited as follows:

Evaluation of Hospital Functions (Japan Council for Quality Health Care)



Asahikawa Medical University Hospital was evaluated by third-party assessors according to prescribed criteria and certified as appropriately serving fundamental functions to provide medical treatments systematically.

HOSPIRATE (NPO Ejnet)



Asahikawa Medical University Hospital is certified as a hospital friendly to all the medical staff and one that promotes support for child-rearing and returning to work.

Medical Laboratory and Blood Center

Surgical Operation Department

Clinical Radiology Department

Appliance Management and Supply Center

Surgical Pathology Department

Medical Center of Acute Medicine

Intensive Care Unit Department

General Medicine Department

Center for Maternity and Infant Care

Management Planning Department

Post-graduate Clinical Training Center

Telemedicine Center

Clinical Research Support Center

Community Health Care Center

Physical Medicine and Rehabilitation Department

Medical Network Office

Clinical Engineering Office

Genetic Counselling Office

Liver Disorder Consultation and Support Room

Outpatient Infusion Center

Nutrition Management Department

Hospital Admission Center

Dialysis Center